



16778 146th Street, SE, Suite. 140, Monroe, WA 98272
 Phone: (800) 438-4026 Fax: (800) 833-9231
 Email: info@amkspeaker.com
 Website: www.amkspeaker.com

AMK Commercial Series
CS 208SB / CS 288SB
 SURFACE MOUNT CABINET SPEAKER SYSTEM



The AMK CS 208SB / CS 288SB is a 2-way speaker system with full-range high output capability. It is available in real oak or walnut veneers, a modern lacquer black or white finish, or unfinished.

The speaker is best suited where recorded music is played at mid or foreground levels (over 1 watt). Typical applications would include restaurants, fashion stores, upscale retailers, board rooms, and houses of worship.

The speaker features a cosmetic fabric grill and includes a U-shaped bracket. The drivers are a long-throw 8" bass-midrange and a 1" cloth dome tweeter.

A multi-positional metal bracket for wall mount use is available as an additional accessory.

Specifications

| | |
|------------------------------|------------------------------------|
| Frequency Response: | 90 - 20,000 Hz |
| Power Handling: | 30 Watts at 8ohms |
| Input Switch | 30W, 20W, 10W, 5W Off and 8 ohms |
| Sound Pressure Level: | 94 dB / 1watt / 1meter |
| Voice-coil Diameter | Woofer: 8" Tweeter: 1" |
| Woofer type: | Paper cone paper with 40 oz magnet |
| Tweeter type: | Cloth dome with 10 oz. magnet |
| Box Loading: | Bass Reflex |
| Crossover: | 6dB LC @ 4500Hz |

Physical Constants

| | |
|---------------------------|---|
| Depth: | 8" |
| Width: | 10" |
| Height: | 16" |
| Color: | Oak or walnut veneer, white or black lacquer, or ready to paint |
| Weight: | 22.1 lbs w/ Bracket |
| Mounting Brackets: | Black Steel (W/ Black hex drive screws) Except White |

Architect's and Engineer's Specifications

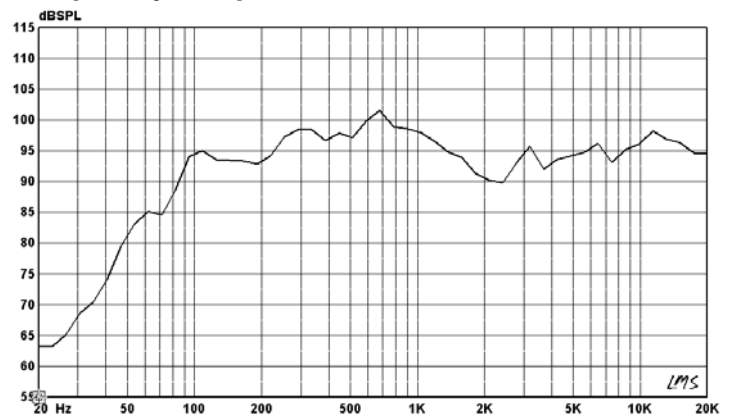
The loudspeaker system shall be AMK CS 208SB. The speaker shall be a 2 way design consisting of 8" woofer and 1" dome tweeter. The speaker system shall be a wood enclosure with oak or walnut veneer, white or black lacquer, or ready to paint. The system shall have an input selector switch that shall have sections of 30W, 20W, 10W, 5W, (for 70.7 volts) off, and 8 ohm positions. The system shall have a frequency response of 90Hz-20kHz (+/- 5dB). The power handling shall be 50watts at 8 ohm impedance. The sensitivity shall be 94dB at 1watt / 1meter.

The dimension of the unit shall have 8" in depth, 10" in width, and 16" in height. The unit can be mounted on a wall with the included AMK U shaped metal bracket. The total weight of the speaker unit shall not exceed 22.1 lbs.

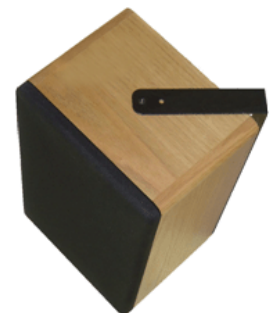
The loudspeaker system shall be AMK Innovations model CS 208SB.

Conforms to EIA Standards: RS-276-A, RS-278-B, RS-426-A

Frequency Response



Wire connections, via 5-way binding posts, are located in the back of the speaker with the input selector switch.



For wall mounting, U-shaped brackets are provided. There are T-nuts installed for the bracket attachment.